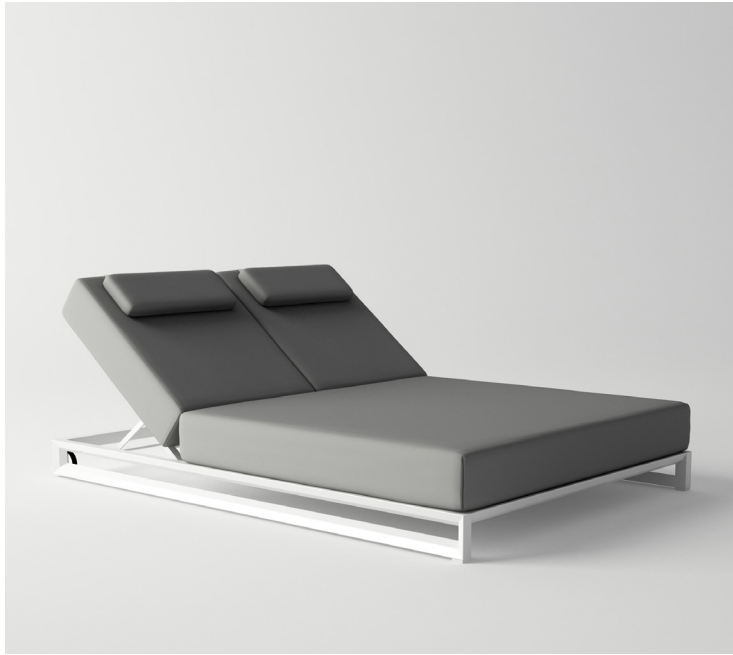


NUBES DOUBLE SUNLOUNGER

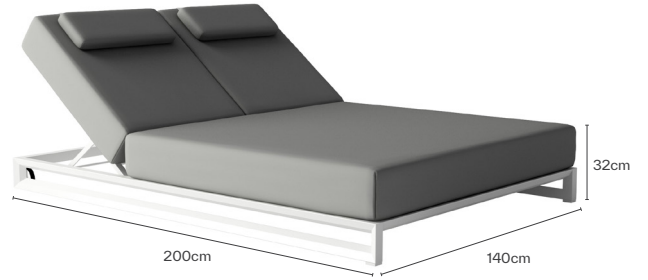


Dimensions W140 x D200 x SH32 cm

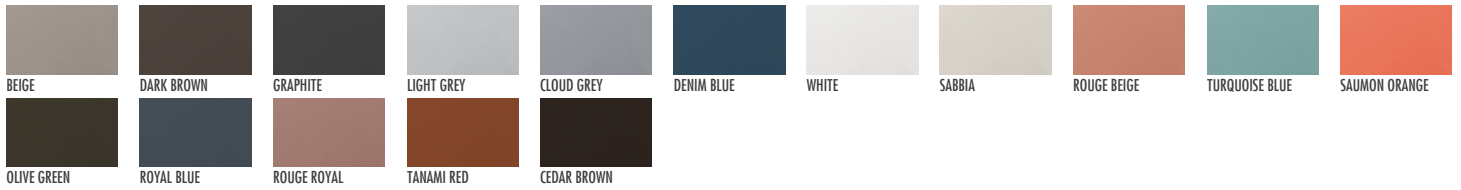
Materials Powder coated aluminum frame with wheels
Matress and head cushion upholstered in fabric or artificial leather
Wheel removal

Option

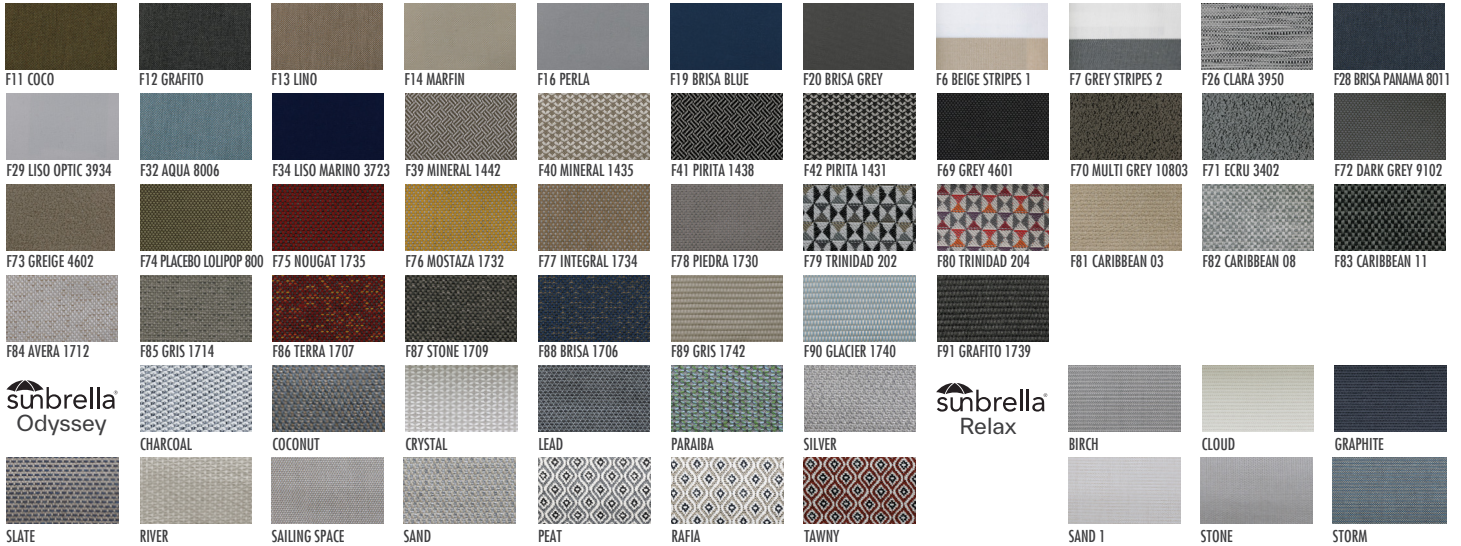
Designer George Tsironas



FRAME



FABRICS



ARTIFICIAL LEATHER

